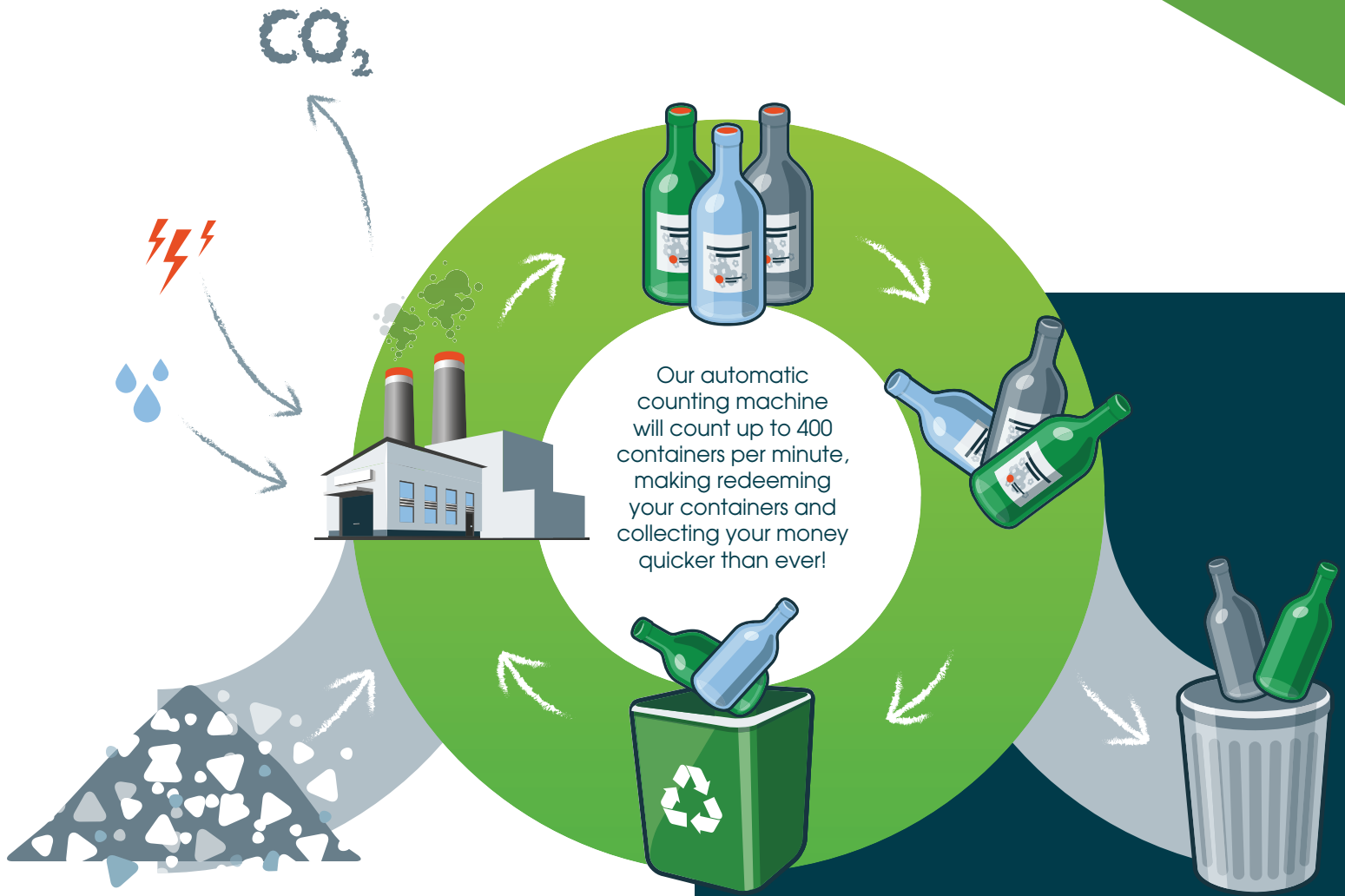


# HOW TO REDEEM

## FULL SERVICE

1. Bring all containers to the counter\*
2. Collect money.

INSPIRING ABILITIES  
CREATING LIMITLESS  
POSSIBILITIES



## HOW BOTTLE DRIVES WORK:

Checks will be mailed within two weeks of the bottle drive date. If non-redeemable containers are found during sorting we will deduct them from the total.

## HOW TO SORT:

Separate containers using the following categories:

### Cans and Plastic

Use the same sized bags for all your returnables. Fill bags as much as you can while still being able to tie them closed.

### Glass

Glass bottles must be placed in 6 pack containers which we can provide for you.

## BOTTLE DRIVE FUNDRAISERS

### Fundraisers

Are you looking for a great fundraiser idea?

Raise money for your charity, school, sports team or other organization while keeping the environment clean and green!

Bottle drives can be held any day of the week. Call for more information and to schedule your event.



# BFAIR

## BOTTLE & CAN REDEMPTION CENTER



### About the BFAIR Bottle & Can Redemption Center

After several years of managing the BFAIR Bottle & Can Redemption Center, BFAIR acquired The Center in July 2019. BFAIR was grateful for the opportunity to continue to provide employment for individuals with disabilities while also playing an important role in north Berkshire.

#### Donations

You may choose to donate your monies from your return of bottles/cans to BFAIR. Donations help to support our mission.

SCAN TO DONATE



SCAN ME

#### Contact Us:

1000 Massachusetts Avenue  
North Adams, MA 01247  
413-663-5056  
Email: [bfairredemptioncenter@bfair.org](mailto:bfairredemptioncenter@bfair.org)

#### Redemption Center Hours:

Monday – Saturday 9:00a-2:00p

[bfair.org](http://bfair.org)



Berkshire Family & Individual Resources

INSPIRING ABILITIES,  
CREATING LIMITLESS  
POSSIBILITIES



### THE BFAIR WAY:

We are a national and state accredited human service agency responsive to the unique needs of people with disabilities and their families through:

- A Dedication to Excellence
- Fiscal Responsibility
- Diverse Service Options
- Community Partnerships
- Safe and Healthy Environments
- Career Opportunities and Advancement

These are our guiding principles. We strive to be the Berkshire's premier service provider for persons with cognitive disabilities, autism and acquired brain injuries. It's in our DNA and we constantly look for new ways to be the best at serving members of our community.

 [facebook.com/BFAIRRedemptionCtr](https://facebook.com/BFAIRRedemptionCtr)

#### PROUD MEMBER AGENCY OF:



Northern Berkshire United Way