

SERVING INDIVIDUALS WITH DISABILITIES SINCE 1994



HOW CAN YOU HELP?

1. DONATE: Your gift provides resources that promote accessibility, foster independence, and offset out-of-pocket costs for individuals

with disabilities.

2. COLLECT BOTTLES AND CANS: Redeem your bottles and cans at our Redemption Center, which provides employment opportunities for persons with disabilities and reduces waste.

3. HOST A DRIVE: Donate your bottles and cans to BFAIR through a collection drive with your friends, family, and workplace.

4. SHOP ON AMAZONSMILE: Designate BFAIR as your charity of choice.



STRATEGIC PLAN

To be viewed by service recipients, families, funders, staff and donors as the preferred human service provider striving to positively

change people's lives one day at a time as evidenced by excellent service options and caring concern.



500 PEOPLE SERVED ANNUALLY, 300 STAFF

With over ten residential homes, including six acquired brain injury homes, and two day programs.

BFAIR has continued to expand since it's incorporation in 1994. Programs include residential, supported employment, day habilitation and community based day services, clinical services, adult family care, community living.



\$15 MILLION OPERATING BUDGET

2020-2022: 16.7 Million and 75% attributed to payroll and benefits
2016-2018: 21% increase
2013-2015: 47% increase

2010-2012: 13% increase
2002: \$5 million

THE BFAIR WAY:

We are a national and state accredited human service agency responsive to the unique needs of people with disabilities and their families through:

- A Dedication to Excellence
- Fiscal Responsibility
- Diverse Service Options
- Community Partnerships
- Safe and Healthy Environments
- Career Opportunities and Advancement

These are our guiding principles. We strive to be the premier service provider for persons with cognitive disabilities, autism and acquired brain injuries. It's in our DNA and we constantly look for new ways to be the best at serving members of our community.



Contact Us:

771 South Church Street
North Adams, MA 01247
info@bfair.org

bfair.org

PROUD MEMBER AGENCY OF:



SCAN TO
DONATE



SCAN ME

SERVICE OVERVIEW

INSPIRING ABILITIES
CREATING LIMITLESS POSSIBILITIES

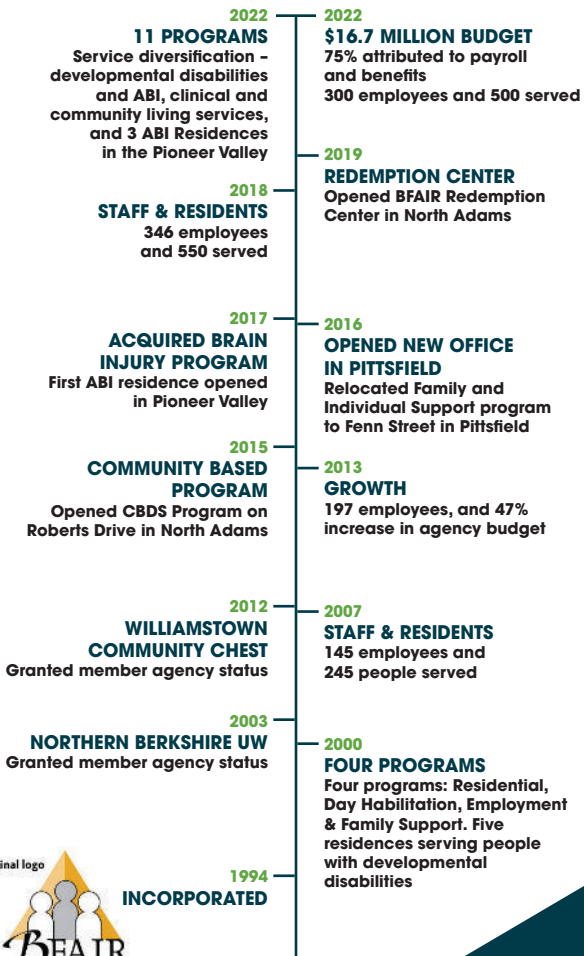
bfair.org

HISTORY

Dedicated to meeting the unique needs of people with disabilities, BFAIR incorporated in 1994 when the agency opened its first residential home for people with developmental disabilities.

Serving nearly 500 residents of our communities and 300 staff the agency is a significant local employer. BFAIR is a Member agency of the Northern Berkshire United Way and the Williamstown Community Chest.

TIMELINE



bfair.org

SERVICE OVERVIEW

Residential Services – Acquired Brain Injury & DDS

In total BFAIR operates over ten residential homes for adults with intellectual disabilities, autism and ABI with residences located in both Berkshire County and the Pioneer Valley.

Employment Services

Employment, training and job placement services for adults and students with disabilities.

Day Habilitation

Our nationally accredited Day Hab provides individualized services including nursing care, OT and speech therapies.

Community Based Day Services

Services are focused on providing community integration opportunities for adults with developmental disabilities and autism.



COMMUNITY SERVICES

Adult Family Care and Shared Living

These programs offer people with medical, physical and/or intellectual disabilities in-home supports provided by a family member or qualified caregiver.

Family and Individual Supports

Providing support to individuals and families in the Berkshire County community.

Community Living Services

BFAIR's Community Living department provides Transitional Support, Individual Support, Community Habilitation, and in-home care for individuals on the ABI or MFP Waiver.

Clinical Services

Our Clinical Department offers supports for the agency's Day and Residential services.

BFAIR Bottle & Can Redemption Center

BFAIR owns and operates a bottle and can redemption center located in North Adams which provides employment and vocational training services for adults with disabilities.

CAREERS

Be part of the amazing team that "inspire abilities and create limitless possibilities" every day!

Generous Benefit Packages for full-time employees include:

- Medical
- Dental
- Vision
- Group and Voluntary Life Insurance
- Long Term Disability
- Flexible Spending and Dependent Care
- Paid Holidays
- Earned Time
- Tuition Assistance/Student Loan Reimbursement